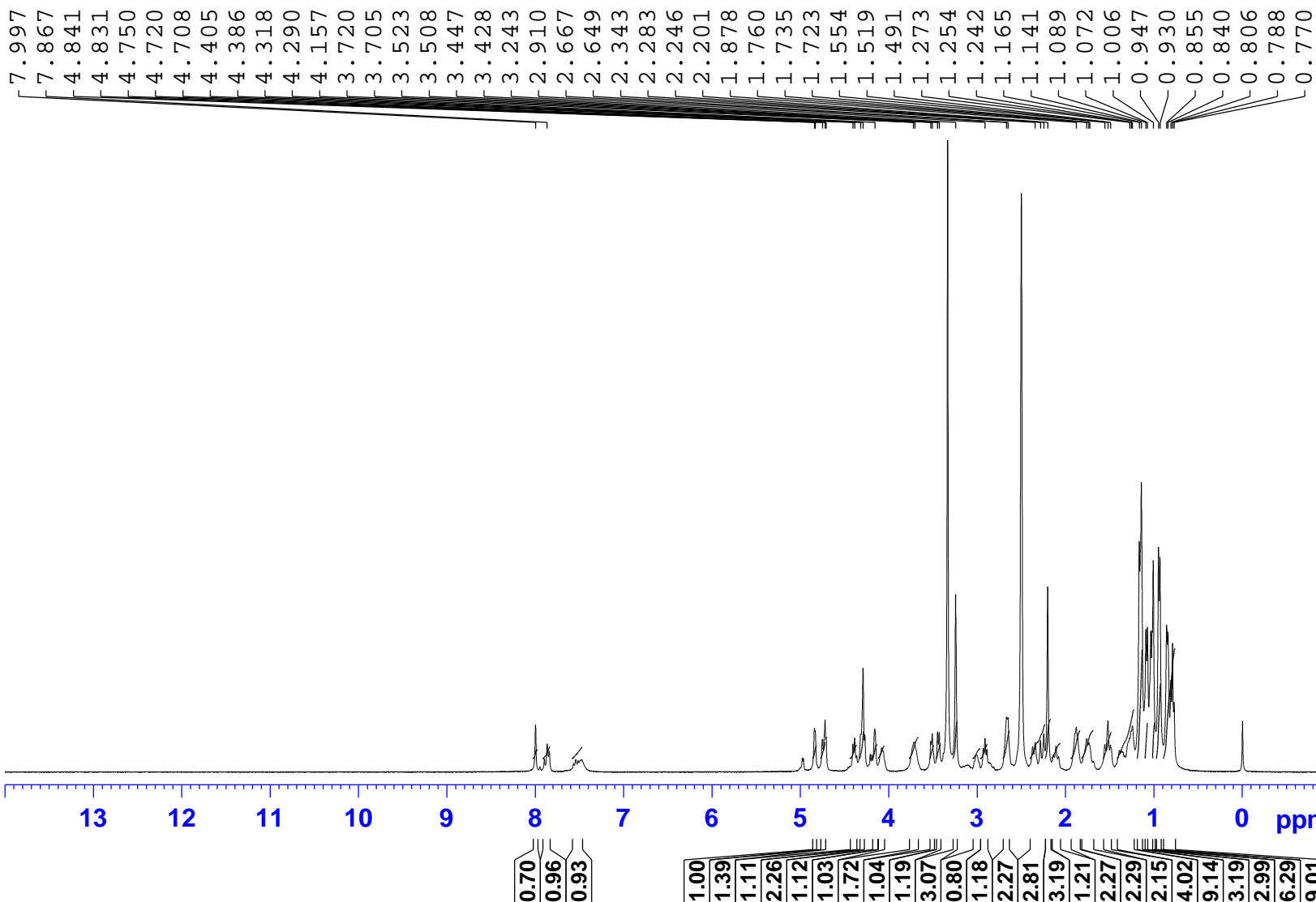


Product Number: AZI- IMP-M
 Batch Number: AZI-M-00176
 Date :- 25-01-2017
 1H-NMR/DMSO



Current Data Parameters
 NAME QC11160831041
 EXPNO 1
 PROCNO 1

F2 - Acquisition Parameters
 Date_ 20170125
 Time 21.57
 INSTRUM spect
 PROBHD 5 mm PABBO BB/
 PULPROG zg30
 TD 36056
 SOLVENT DMSO
 NS 16
 DS 2
 SWH 12019.230 Hz
 FIDRES 0.333349 Hz
 AQ 1.4999295 sec
 RG 140.13
 DW 41.600 usec
 DE 6.50 usec
 TE 295.7 K
 D1 1.0000000 sec
 TD0 1

==== CHANNEL f1 =====
 SF01 400.1324710 MHz
 NUC1 1H
 P1 14.00 usec
 PLW1 13.47000027 W

F2 - Processing parameters
 SI 65536
 SF 400.1300043 MHz
 WDW EM
 SSB 0
 LB 0.30 Hz
 GB 0
 PC 1.00

Product Number: AZI- IMP-M
Batch Number: AZI-M-00176
Date :- 25-01-2017
1H-NMR/DMSO



Current Data Parameters
NAME QC11160831041
EXPNO 1
PROCNO 1

F2 - Acquisition Parameters
Date_ 201
Time 21.57
INSTRUM spect
PROBHD 5 mm PABBO BB/
PULPROG zg30
TD 36056
SOLVENT DMSO
NS 16
DS 2
SWH 12019.230 Hz
FIDRES 0.333349 Hz
AQ 1.4999295 sec
RG 140.13
DW 41.600 usec
DE 6.50 usec
TE 295.7 K
D1 1.0000000 sec
TD0 1

=====
CHANNEL f1
SFO1 400.1324710 MHz
NUC1 1H
P1 14.00 usec
PLW1 13.47000027 W

F2 - Processing parameters
SI 65536
SF 400.1300043 MHz
WDW EM
SSB 0
LB 0.30 Hz
GB 0
PC 1.00

— 7.997

— 7.897

— 7.867

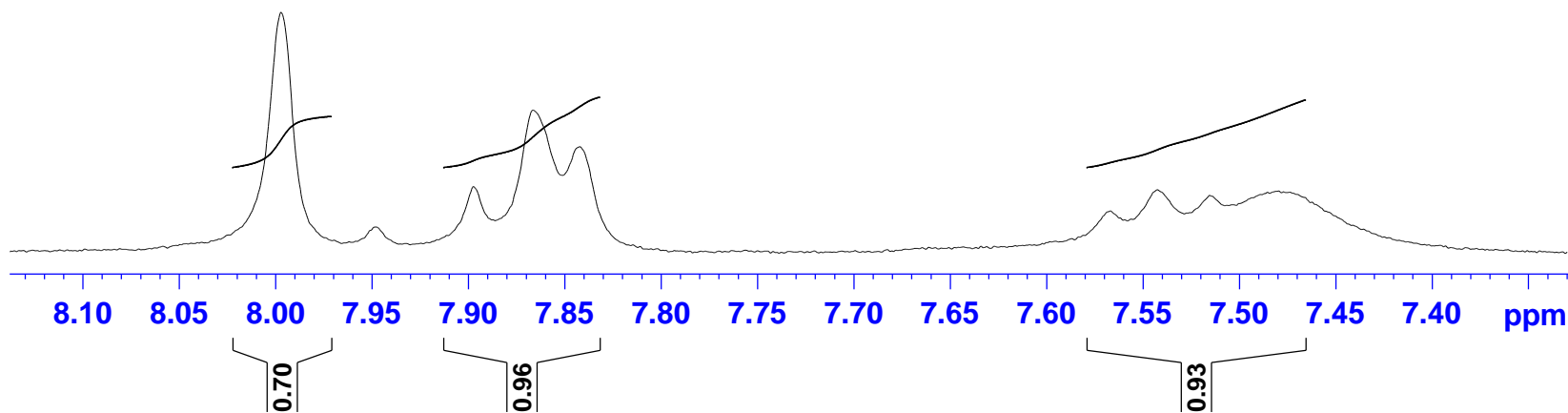
— 7.842

— 7.567

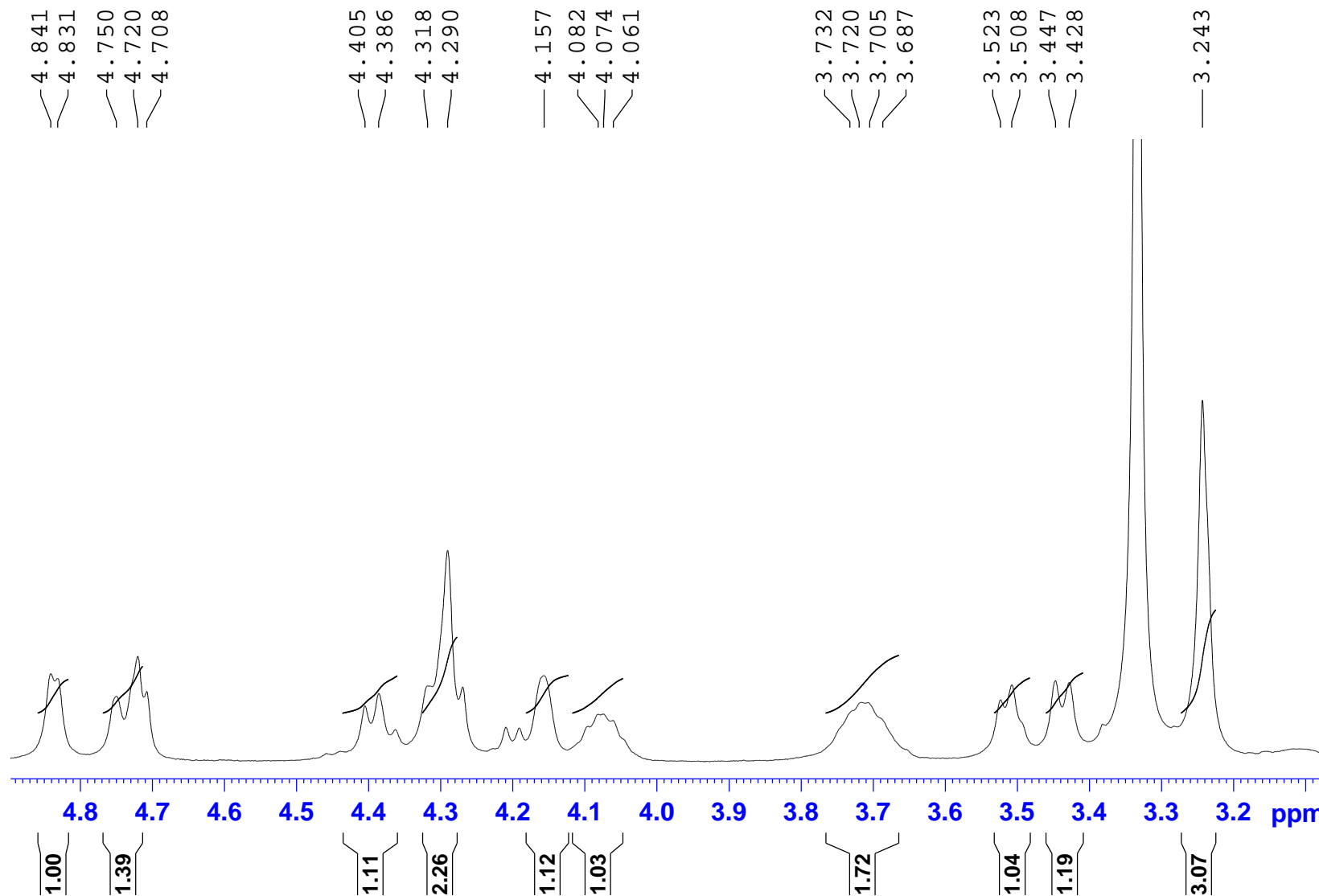
— 7.543

— 7.516

— 7.480



Product Number: AZI- IMP-M
 Batch Number: AZI-M-00176
 Date :- 25-01-2017
 1H-NMR/DMSO



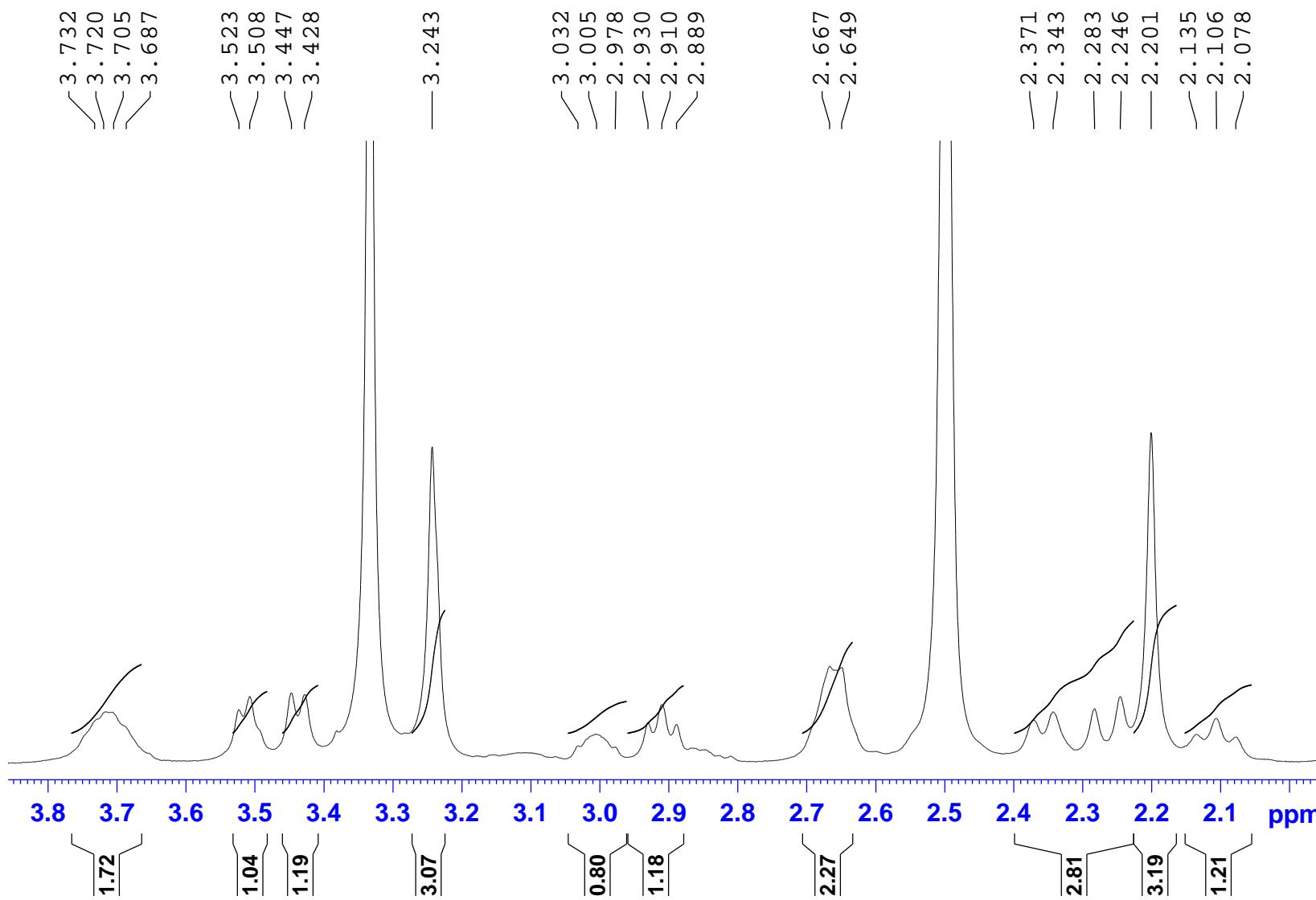
Current Data Parameters
 NAME QC11160831041
 EXPNO 1
 PROCNO 1

F2 - Acquisition Parameters
 Date_ 20170125
 Time 21.57
 INSTRUM spect
 PROBHD 5 mm PABBO BB/
 PULPROG zg30
 TD 36056
 SOLVENT DMSO
 NS 16
 DS 2
 SWH 12019.230 Hz
 FIDRES 0.333349 Hz
 AQ 1.4999295 sec
 RG 140.13
 DW 41.600 usec
 DE 6.50 usec
 TE 295.7 K
 D1 1.0000000 sec
 TD0 1

==== CHANNEL f1 =====
 SF01 400.1324710 MHz
 NUC1 1H
 P1 14.00 usec
 PLW1 13.47000027 W

F2 - Processing parameters
 SI 65536
 SF 400.1300043 MHz
 WDW EM
 SSB 0
 LB 0.30 Hz
 GB 0
 PC 1.00

Product Number: AZI- IMP-M
 Batch Number: AZI-M-00176
 Date :- 25-01-2017
 1H-NMR/DMSO



Current Data Parameters
 NAME QC11160831041
 EXPNO 1
 PROCNO 1

F2 - Acquisition Parameters
 Date_ 20170125
 Time 21.57
 INSTRUM spect
 PROBHD 5 mm PABBO BB/
 PULPROG zg30
 TD 36056
 SOLVENT DMSO
 NS 16
 DS 2
 SWH 12019.230 Hz
 FIDRES 0.333349 Hz
 AQ 1.4999295 sec
 RG 140.13
 DW 41.600 usec
 DE 6.50 usec
 TE 295.7 K
 D1 1.00000000 sec
 TD0 1

==== CHANNEL f1 =====
 SF01 400.1324710 MHz
 NUC1 1H
 P1 14.00 usec
 PLW1 13.47000027 W

F2 - Processing parameters
 SI 65536
 SF 400.1300043 MHz
 WDW EM
 SSB 0
 LB 0.30 Hz
 GB 0
 PC 1.00

Product Number: AZI- IMP-M
 Batch Number: AZI-M-00176
 Date :- 25-01-2017
 1H-NMR/DMSO



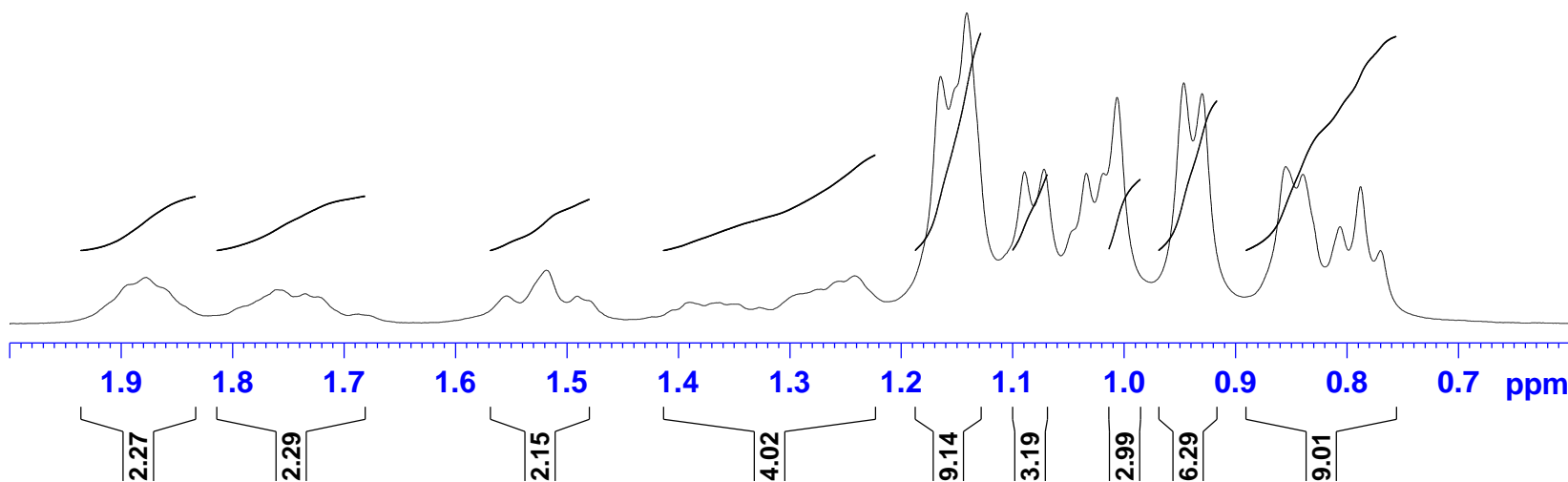
Current Data Parameters
 NAME QC11160831041
 EXPNO 1
 PROCNO 1

F2 - Acquisition Parameters
 Date_ 20170125
 Time 21.57
 INSTRUM spect
 PROBHD 5 mm PABBO BB/
 PULPROG zg30
 TD 36056
 SOLVENT DMSO
 NS 16
 DS 2
 SWH 12019.230 Hz
 FIDRES 0.333349 Hz
 AQ 1.4999295 sec
 RG 140.13
 DW 41.600 usec
 DE 6.50 usec
 TE 295.7 K
 D1 1.0000000 sec
 TD0 1

==== CHANNEL f1 =====
 SFO1 400.1324710 MHz
 NUC1 1H
 P1 14.00 usec
 PLW1 13.47000027 W

F2 - Processing parameters
 SI 65536
 SF 400.1300043 MHz
 WDW EM
 SSB 0
 LB 0.30 Hz
 GB 0
 PC 1.00

— 1.878
 — 1.760
 — 1.735
 — 1.723
 — 1.554
 — 1.519
 — 1.491
 — 1.390
 — 1.363
 — 1.351
 — 1.327
 — 1.273
 — 1.254
 — 1.242
 — 1.165
 — 1.141
 — 1.089
 — 1.072
 — 1.006
 — 0.947
 — 0.930
 — 0.855
 — 0.840
 — 0.806
 — 0.788
 — 0.770



#	ADDRESS	FREQUENCY		INTENSITY
		[Hz]	[PPM]	
1	28769.6	3199.960	7.9973	0.91
2	28987.6	3159.987	7.8974	0.26
3	29055.0	3147.623	7.8665	0.54
4	29107.8	3137.940	7.8423	0.40
5	29708.4	3027.784	7.5670	0.16
6	29761.9	3017.981	7.5425	0.24
7	29820.8	3007.177	7.5155	0.22
8	29898.9	2992.852	7.4797	0.24
9	35655.9	1937.029	4.8410	0.84
10	35677.0	1933.148	4.8313	0.80
11	35854.2	1900.658	4.7501	0.63
12	35919.0	1888.774	4.7204	1.01
13	35946.2	1883.772	4.7079	0.68
14	36606.7	1762.653	4.4052	0.54
15	36648.5	1754.970	4.3860	0.66
16	36796.5	1727.841	4.3182	0.73
17	36856.9	1716.758	4.2905	2.01
18	37148.8	1663.220	4.1567	0.83
19	37312.7	1633.171	4.0816	0.46
20	37328.8	1630.210	4.0742	0.46
21	37358.5	1624.768	4.0606	0.40
22	38074.3	1493.485	3.7325	0.47
23	38102.5	1488.324	3.7196	0.56
24	38134.5	1482.442	3.7049	0.56
25	38174.7	1475.079	3.6865	0.40
26	38530.7	1409.778	3.5233	0.60
27	38565.0	1403.496	3.5076	0.74
28	38697.0	1379.288	3.4471	0.78
29	38738.4	1371.686	3.4281	0.76
30	39141.8	1297.702	3.2432	3.43
31	39603.1	1213.114	3.0318	0.21
32	39661.5	1202.391	3.0050	0.33
33	39721.5	1191.387	2.9775	0.20
34	39824.7	1172.461	2.9302	0.46
35	39868.4	1164.458	2.9102	0.65

36	39914.8	1155.936	2.8889	0.44
37	40399.4	1067.067	2.6668	1.06
38	40437.4	1060.104	2.6494	1.05
39	41044.1	948.828	2.3713	0.49
40	41105.9	937.505	2.3430	0.57
41	41237.0	913.457	2.2829	0.61
42	41318.4	898.532	2.2456	0.74
43	41416.1	880.606	2.2008	3.58
44	41559.4	854.318	2.1351	0.33
45	41622.5	842.754	2.1062	0.50
46	41684.0	831.470	2.0780	0.30
47	42121.2	751.284	1.8776	0.86
48	42377.4	704.309	1.7602	0.64
49	42432.8	694.146	1.7348	0.57
50	42457.7	689.584	1.7234	0.51
51	42827.5	621.762	1.5539	0.53
52	42903.8	607.757	1.5189	0.99
53	42965.4	596.474	1.4907	0.52
54	43185.5	556.101	1.3898	0.42
55	43243.5	545.457	1.3632	0.41
56	43269.5	540.696	1.3513	0.39
57	43321.9	531.093	1.3273	0.32
58	43441.2	509.205	1.2726	0.65
59	43481.1	501.883	1.2543	0.79
60	43508.0	496.961	1.2420	0.89
61	43676.4	466.071	1.1648	4.46
62	43727.7	456.668	1.1413	5.59
63	43840.9	435.902	1.0894	2.75
64	43879.1	428.899	1.0719	2.80
65	44022.2	402.651	1.0063	4.08
66	44152.4	378.763	0.9466	4.34
67	44188.7	372.121	0.9300	4.15
68	44352.1	342.151	0.8551	2.84
69	44385.9	335.949	0.8396	2.71
70	44458.5	322.625	0.8063	1.77
71	44498.5	315.302	0.7880	2.49
72	44537.7	308.100	0.7700	1.34